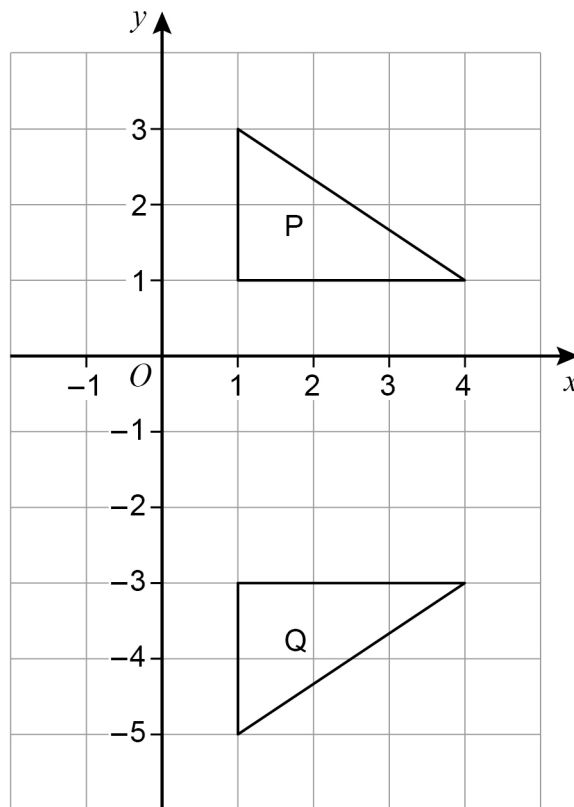


- 1 (a) Here are two triangles, P and Q.



Here is a statement.

A transformation that maps P to Q is a reflection in the line $x = -1$

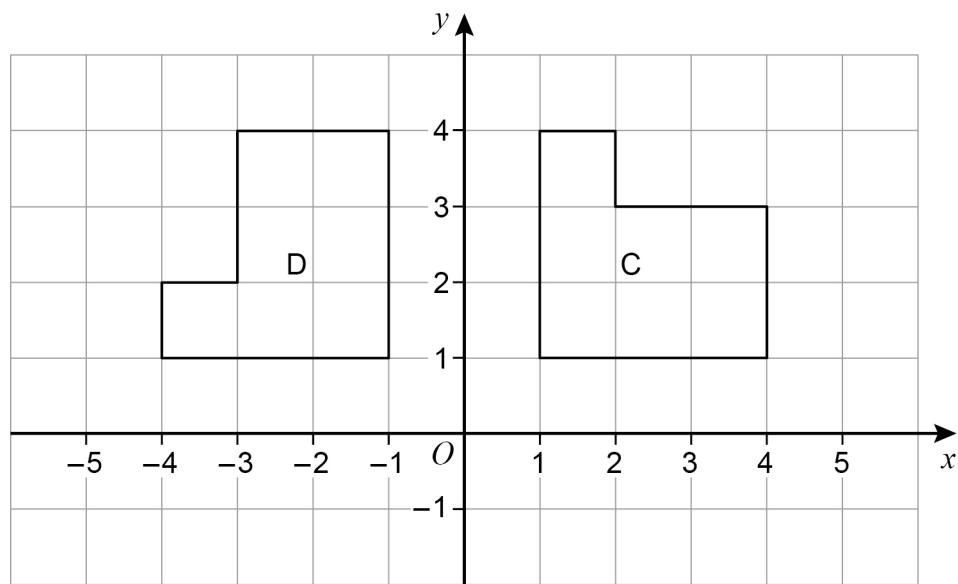
Make **one** criticism of the statement.

[1 mark]

Should be

↳ Reflection in the line $y = -1$. (1)

1 (b) Here are two shapes, C and D.



Here is a statement.

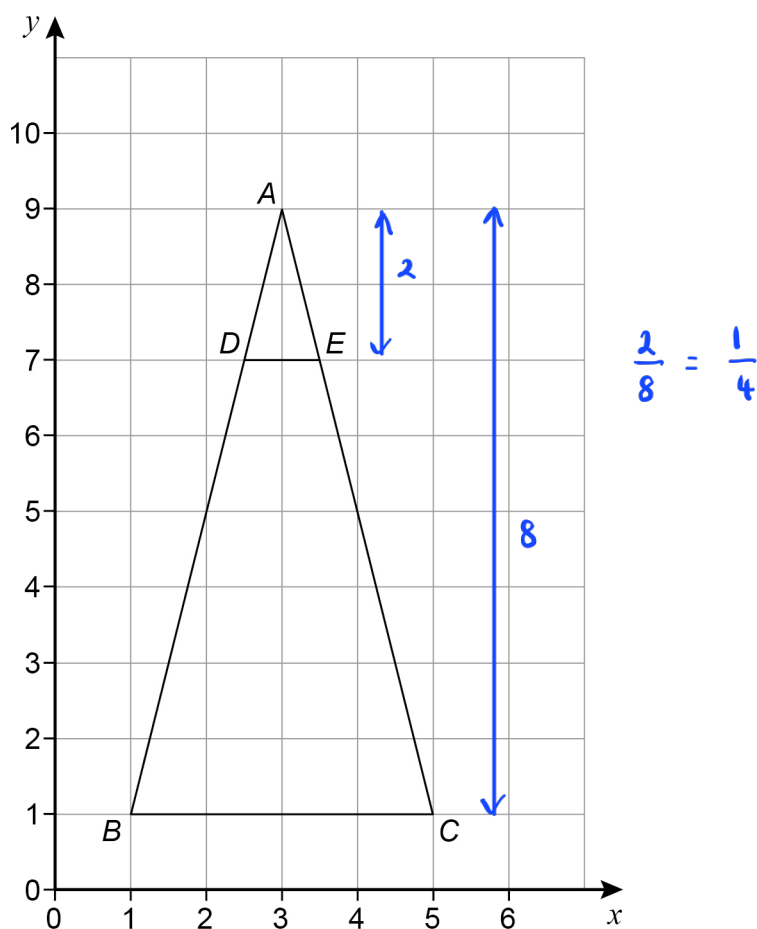
A transformation that maps C to D is a rotation through 90° anticlockwise.

Make **one** criticism of the statement.

[1 mark]

Missing centre of rotation at point O. (1)

2



Describe fully the **single** transformation that maps triangle ABC to triangle ADE .

[3 marks]

Enlargement of scale factor $\frac{1}{4}$ at centre A .

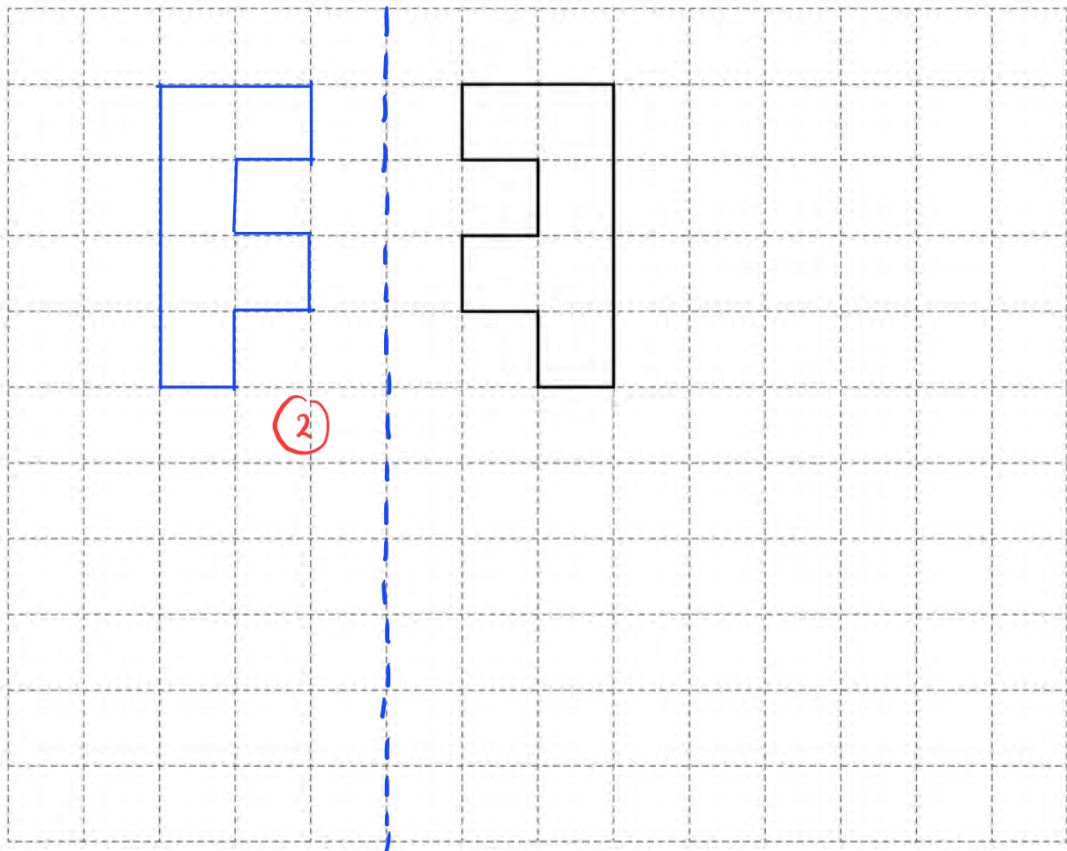
①

①

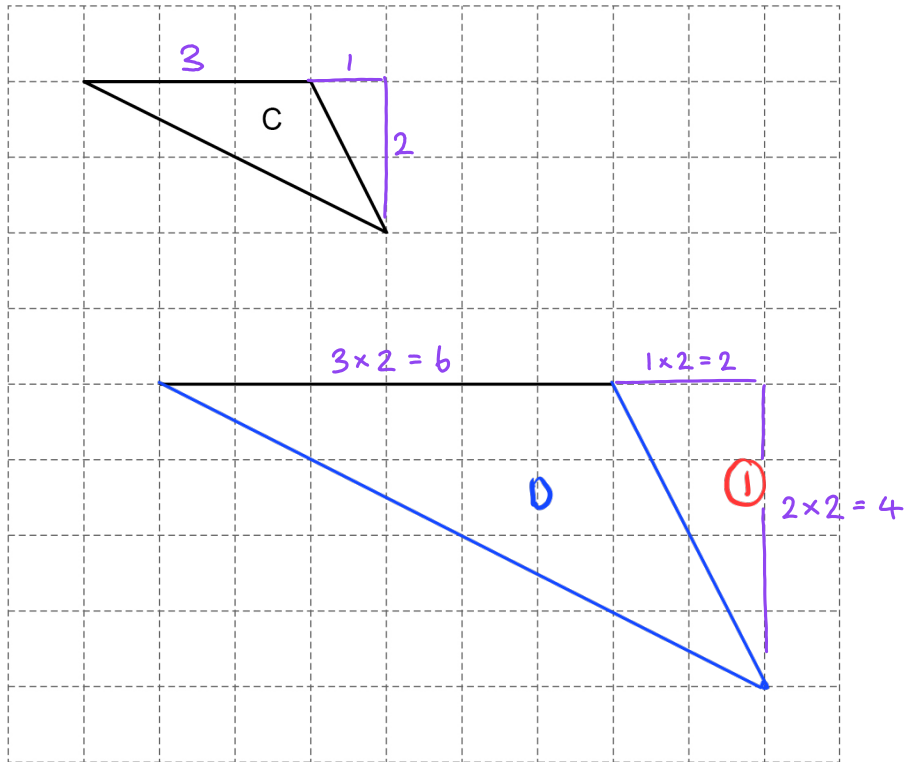
①

- 3 (a)** On this grid draw a reflection of shape **C**.
Show your mirror line.

[2 marks]



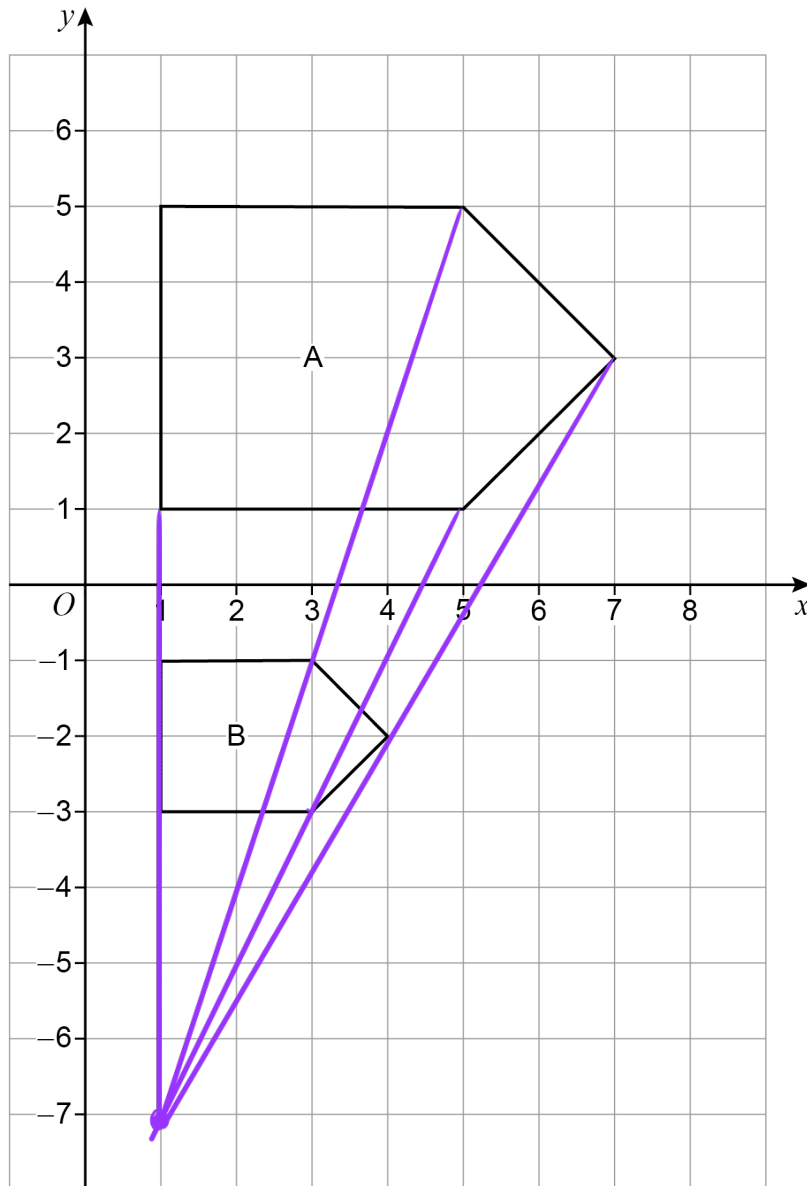
- 4 (a) On this grid, shape C is shown.
One side of shape D is also shown.



Complete shape D so that it is an enlargement of shape C with scale factor 2

[1 mark]

5



Describe fully the **single** transformation that maps shape A to shape B.

[3 marks]

Enlargement of scale factor $\frac{1}{2}$ at point $(1, -7)$.

✓ ①

✓ ①

✓ ①